



Product Advisory #6
M-2025D Supersedes M-2025C

August 12, 2009

**Subject: Product Advisory #6
Beckwith Electric M-2025C**

**Applicable Products: M-2025C Current Loop Interface Module
M-2025D Current Loop Interface Module Supersedes M-2025C**

Summary:

We are issuing this advisory on the introduction of the M-2025D model to supersede the M-2025C model and to clarify the availability of the M-2025B Current Loop Interface Module.

Analysis:

Beckwith Electric Company, Inc., (BECO) will offer both the M-2025B and M-2025D Current Loop Interface Modules. The M-2025D supersedes the M-2025C and can also replace the M-2025B. However, BECO will continue to offer the M-2025B Current Loop Interface Modules.

The BECO M-2025B is a current-to-voltage analog converter used to provide tap position knowledge "exclusively" with the following INCON Models: Model 1250B Load Tap Changer Position Indicator, Model 1250-LTC Load Tap Changer Position Monitor, both with Synchro Transmitter and Model 1511-LTC Slidewire Load Tap Changer Position Indicator with Position Transmitter. These INCON models all have four current configuration ranges the user can set for the optional analog output chosen. These are: 0 to 1 mA dc, -1 to +1 mA dc, 0 to 2mA dc and 4 to 20mA dc.

The BECO M-2025C is a current-to-voltage analog converter used "exclusively" with the BECO M-29XX series of Tap Position Sensors to provide positive tap position knowledge. The various BECO Tap Position Sensors all require a 4 to 20 mA interface. The M-2025C Module can only be configured for a 4 to 20 mA signal.

- **The BECO M-2025D is electrically interchangeable with the M-2025B and can be used with all four analog output ranges in place of the M-2025B for all applications with the INCON 1250B, 1250-LTC, and 1511-LTC models of Load Tap Changer Position Indicator or Monitor.**
- **The BECO M-2025D is electrically and mechanically interchangeable with the M-2025C and can be used in place of the M-2025C for all applications with the BECO M-29XX series of Tap Position Sensors.**
- **The BECO M-2025B can only be used with the INCON models of Load Tap Changer Position Indicator or Monitor and can not be used with the BECO M-29XX series of Tap Position Sensors.**
- **While the BECO M-2025D is electrically interchangeable with the M-2025B, it is not mechanically interchangeable. See mounting dimension indicated in Figures 1 and 2.**

Product Advisory #6
M-2025D Supersedes M-2025C

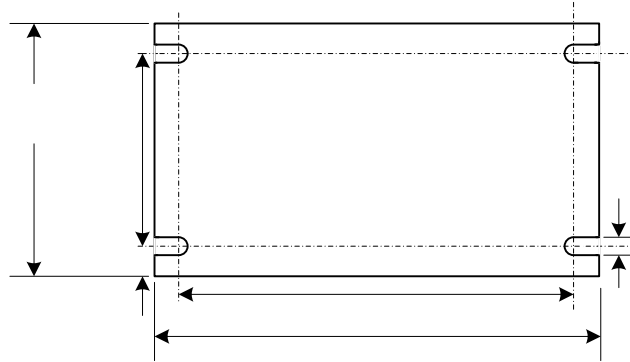


Figure 1. The mounting bolt pattern of the M-2025B

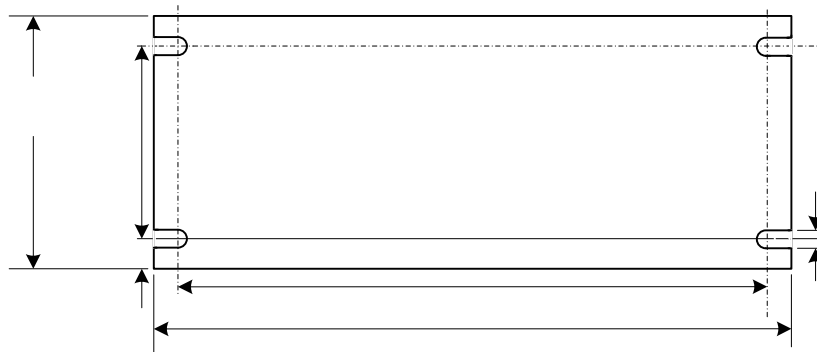


Figure 2. The mounting bolt pattern for the M-2025C and M-2025D

If you have any questions or require additional information, please contact your Beckwith Sales Representative or Beckwith Customer Technical Support, telephone number 727-544-2326. **2.62"**
(6.65 cm)

Sincerely,

Clark Shaughnessy

Beckwith Electric Company, Inc.
Manager, Customer Technical Support
Tel: (727) 545-7641
Fax: (727)-545-0121
Email:
cshaughnessy@beckwithelectric.com